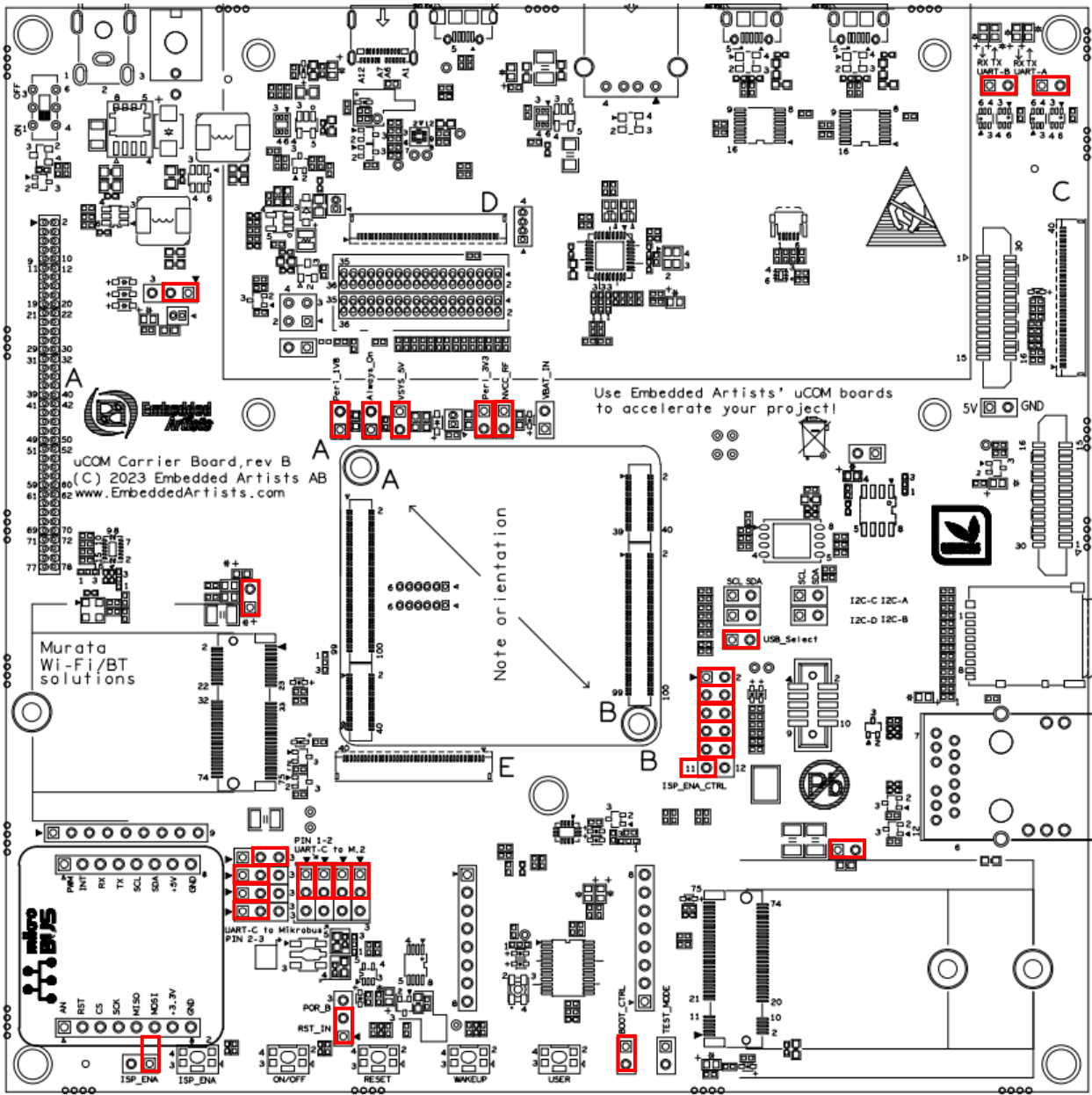
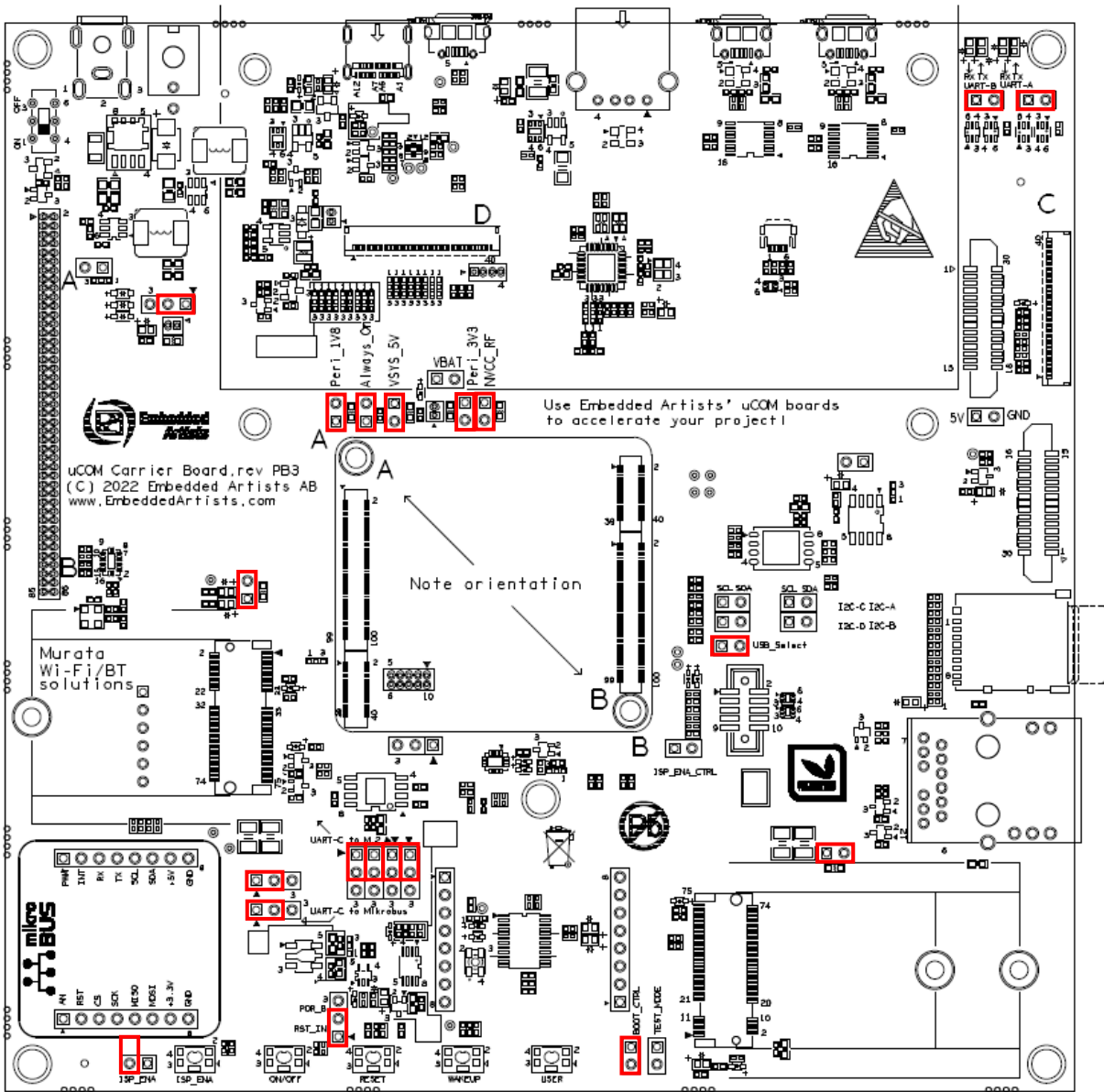


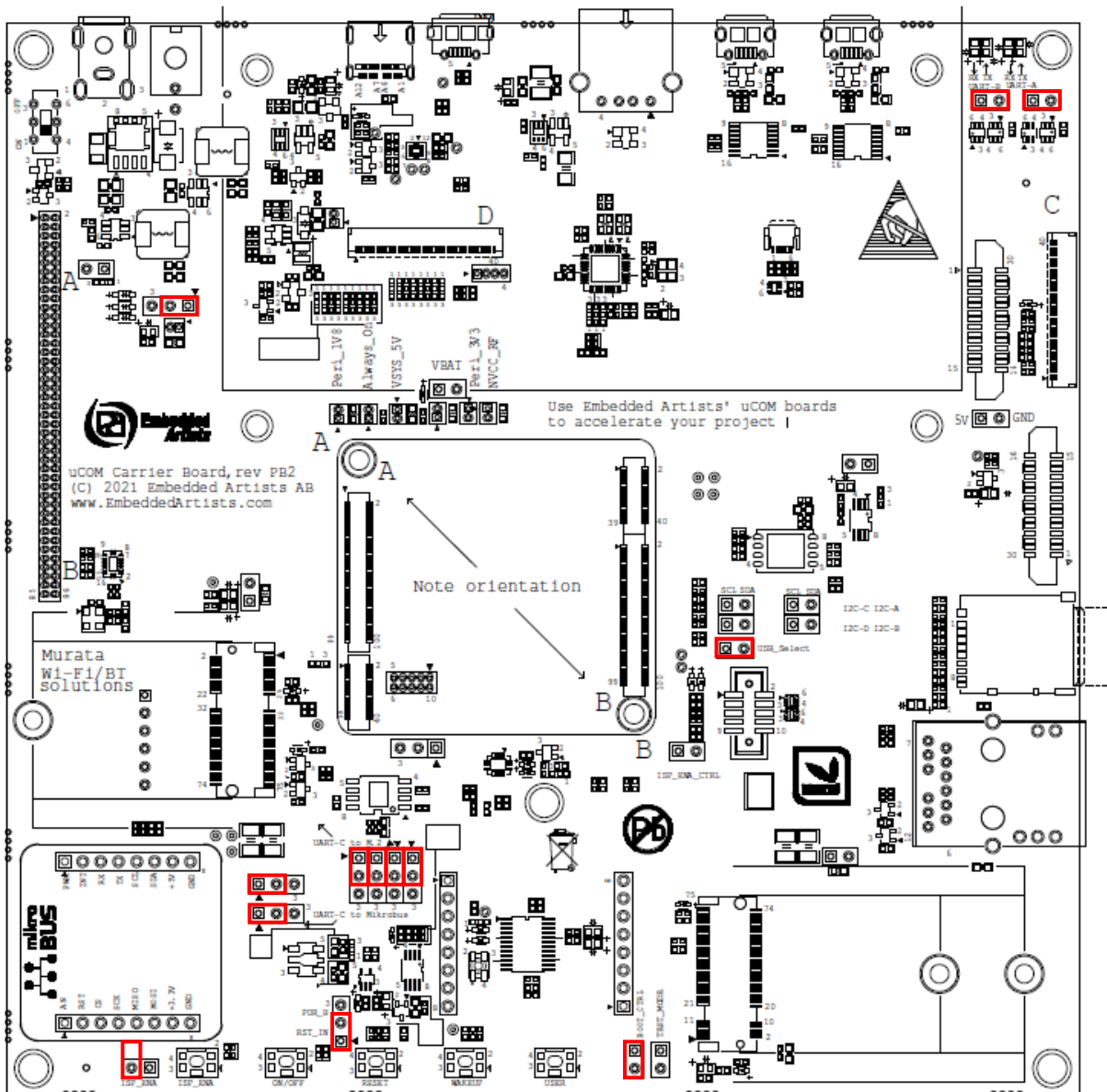
Default jumper settings for iMX8M Mini/Nano Developer's Kit V3



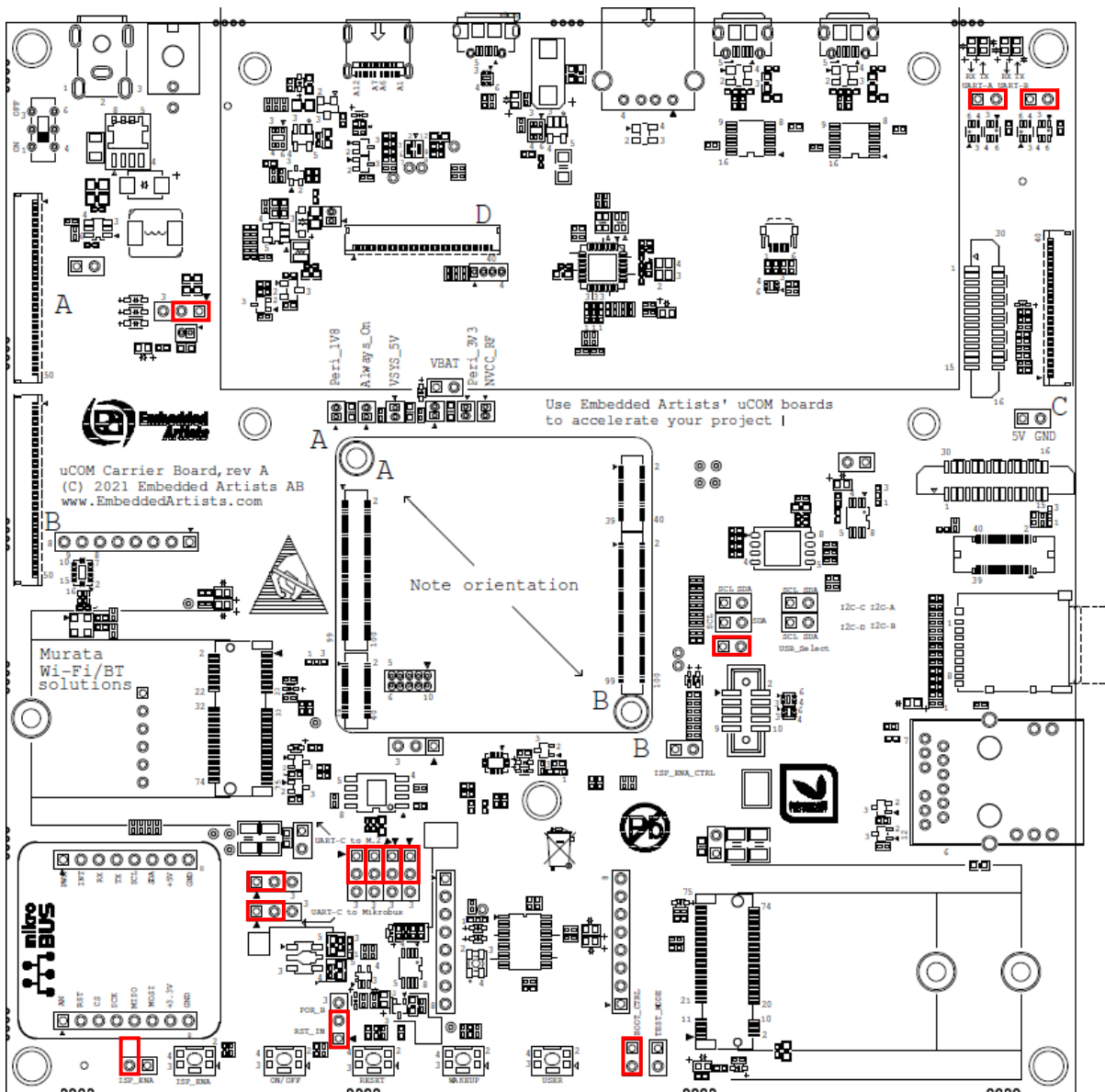
The picture above is for **rev B** of the uCOM Carrier Board.



The picture above is for **rev PB3** of the uCOM Carrier Board.



The picture above is for **rev PB2** of the uCOM Carrier Board.



The picture above is for **rev A** of the uCOM Carrier Board.