

Page 2

SODIMM connector interface, Expansion connectors,
Current monitors

Page 3

JTAG interface, Memory card interface,
USB interface, reset key&LED, Optional connections

Page 4

I2C: LEDs and joystick, Boot mode control,
Accelerometer and analog input

Page 5

UART: USB-to-serial interface, RS232 interface,
and XBee interface

Page 6

QVGA display module interface

Page 7

UDA1380 codec interface

Rev 1.1

Change RS232 DSUB9 to Male pinout.
Corrected USB TX/RX LED mixup on page 5.
Added R102/R103/R104/R105.
J11 not mounted. Added fix; RXX(3K) parallel to J13

Rev 1.0

Original revision



© Embedded Artists AB

TITLE: LPC31xx Base Board v1.1

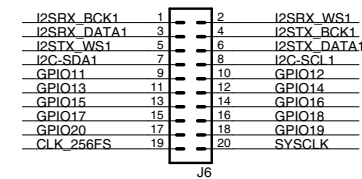
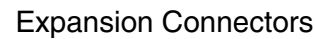
Document Number:

REV:

Date: 2009-02-22 18:13:33

Sheet: 1/7

LPC31xx OEM Board



(C) Embedded Artists AB

TITLE: LPC31xx Base Board v1.1

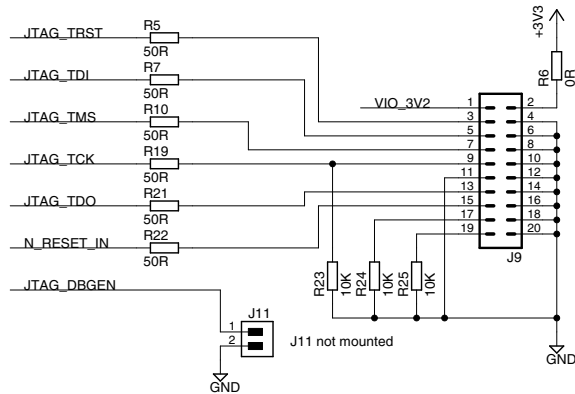
Document Number:

REV:

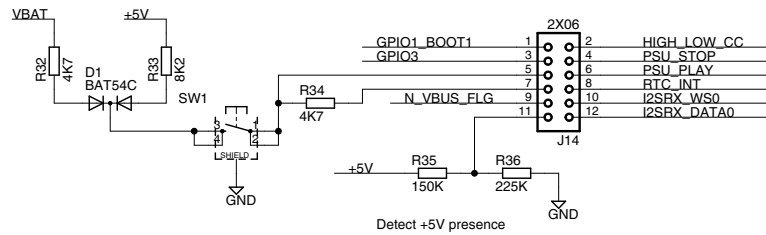
Date: 2009-02-22 18:13:33

Sheet: 2/7

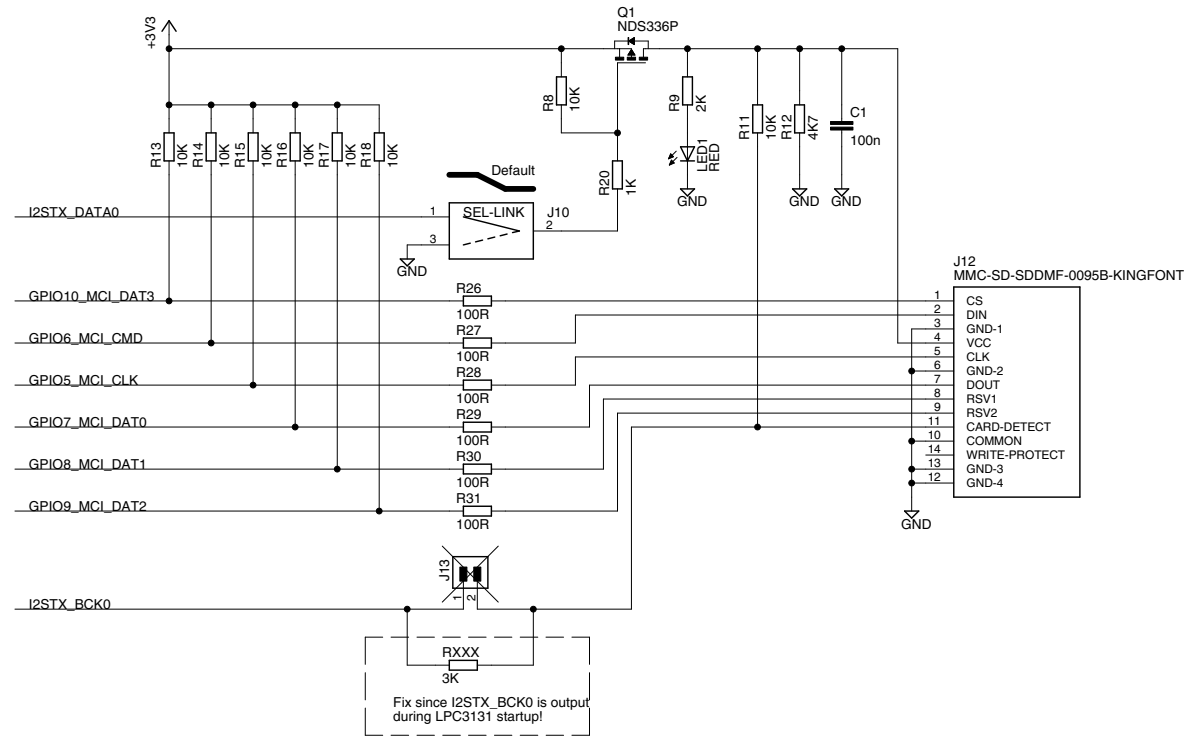
JTAG Interface



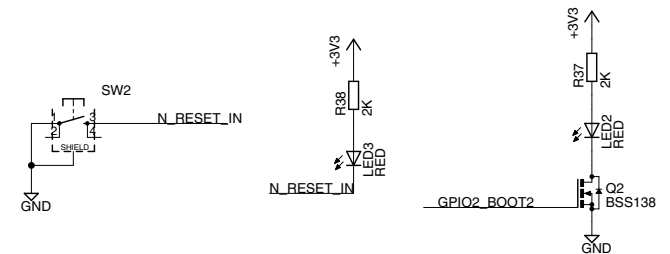
Optional Connections



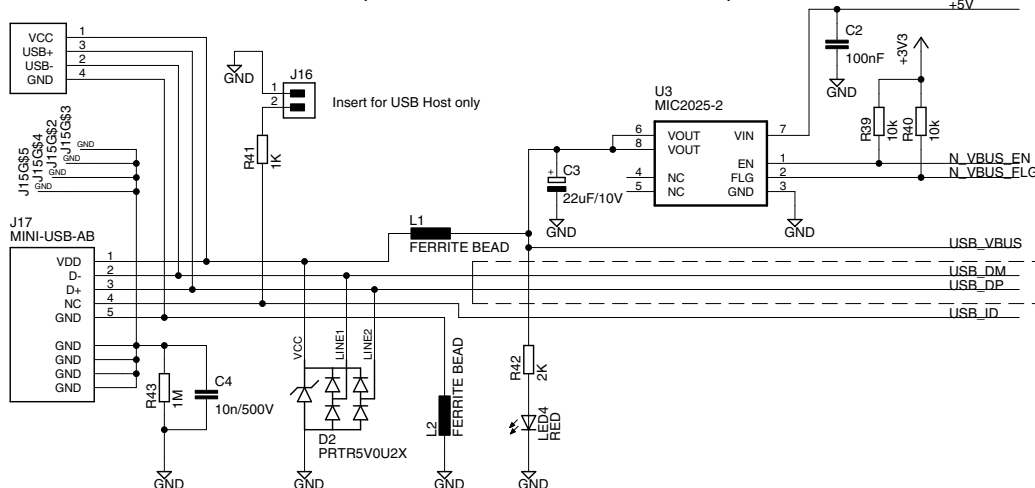
MMC/SD Memory Card Interface



Reset Push-button & LEDs



USB Host/OTG Interface (with A & mini-AB connector)



45 ohm impedance routing, 90 ohm differential
No tracks within 10 times trace width
No via's and no sharp angles



(C) Embedded Artists AB

TITLE: LPC31xx Base Board v1.1

Document Number:

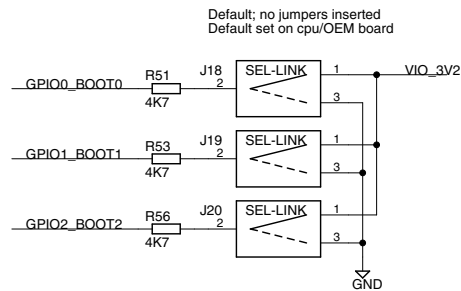
REV:

Date: 2009-02-22 18:13:33

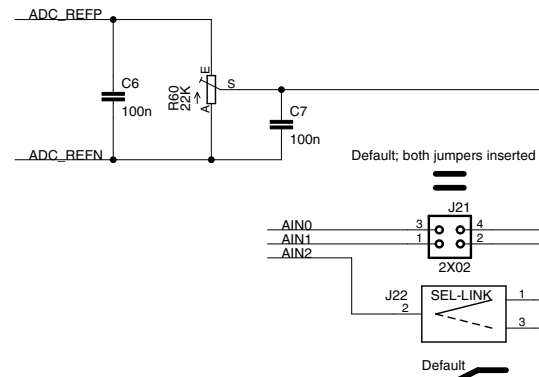
Sheet: 3/7

Boot mode

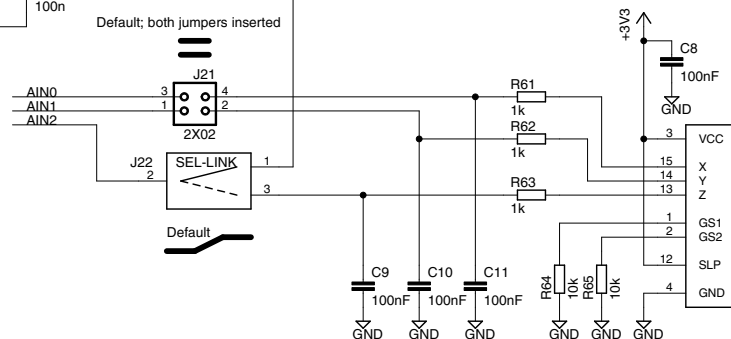
GPIO0	GPIO1	GPIO2	Boot source
LOW	LOW	LOW	NAND boot
LOW	LOW	HIGH	SPI boot
LOW	HIGH	LOW	USB via DPU class
LOW	HIGH	HIGH	MMC/SD card
HIGH	LOW	HIGH	Functional test mode
HIGH	HIGH	LOW	UART 115.2kbps 8N1
HIGH	HIGH	HIGH	Test mode



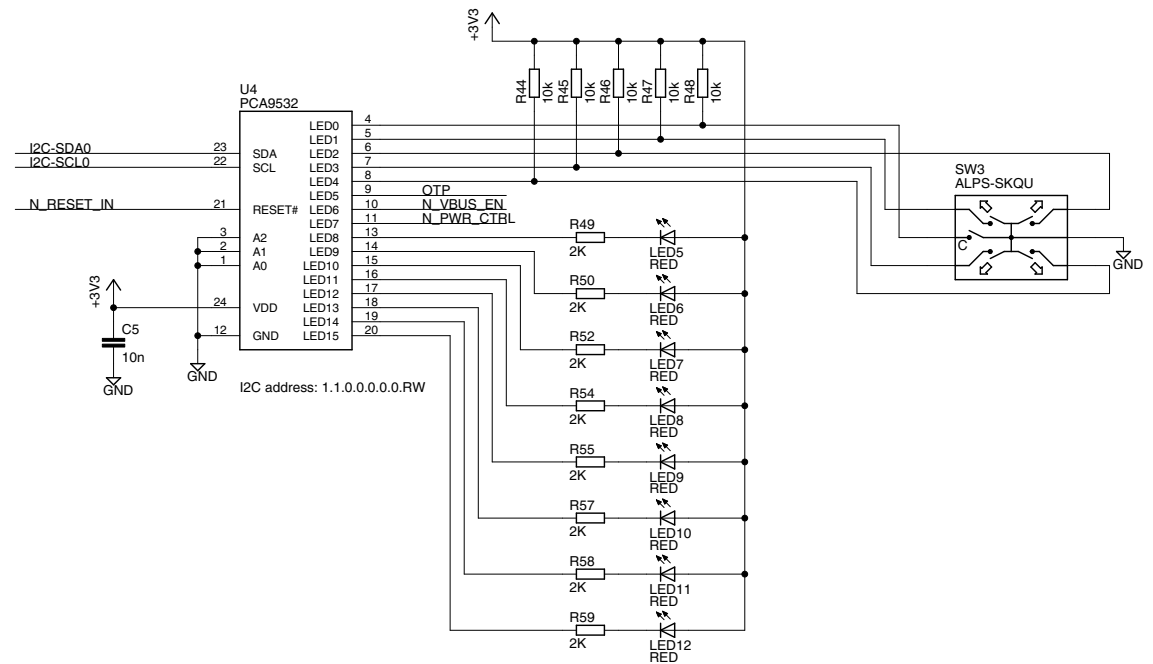
Analog Input



3-axis accelerometer



LEDs and 5-key joystick switch



(C) Embedded Artists AB

TITLE: LPC31xx Base Board v1.1

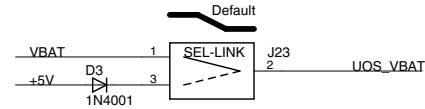
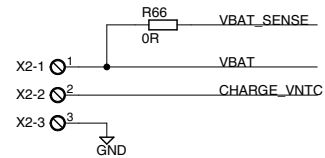
Document Number:

REV:

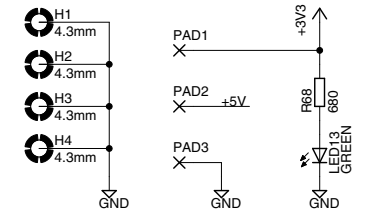
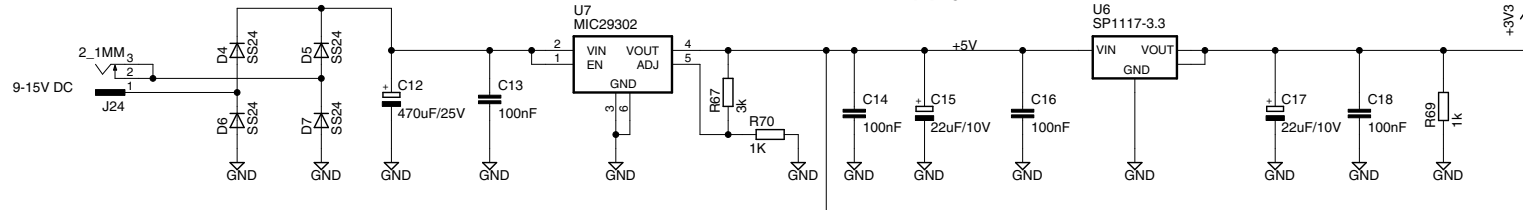
Date: 2009-02-22 18:13:33

Sheet: 4/7

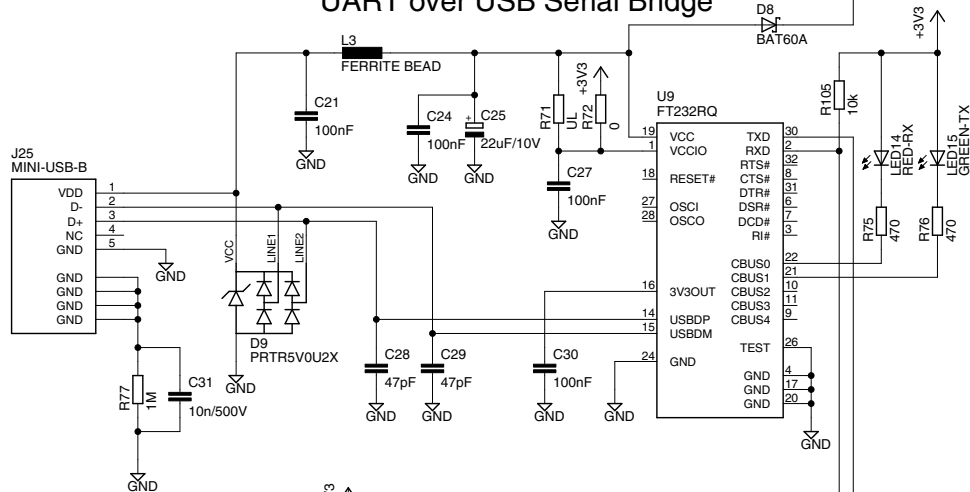
Li-ion Battery



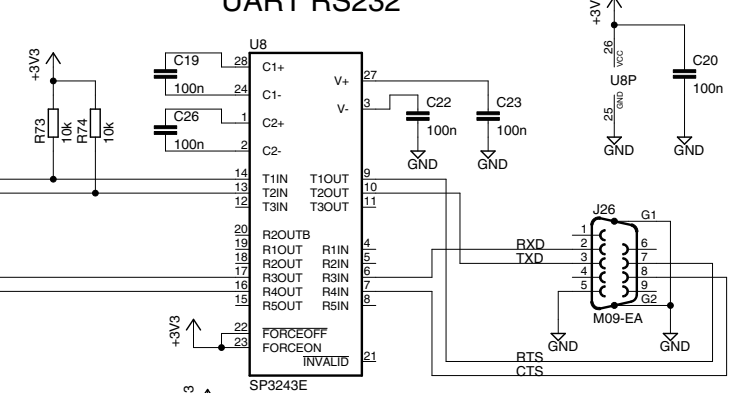
Power Supply



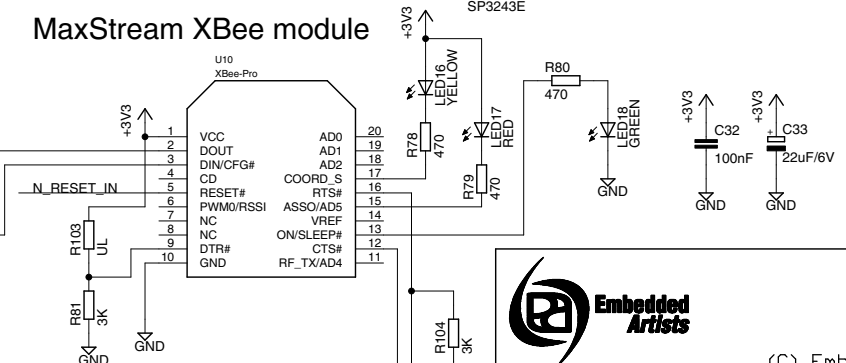
UART over USB Serial Bridge



UART RS232



MaxStream XBee module



(C) Embedded Artists AB

TITLE: LPC31xx Base Board v1.1

Document Number:

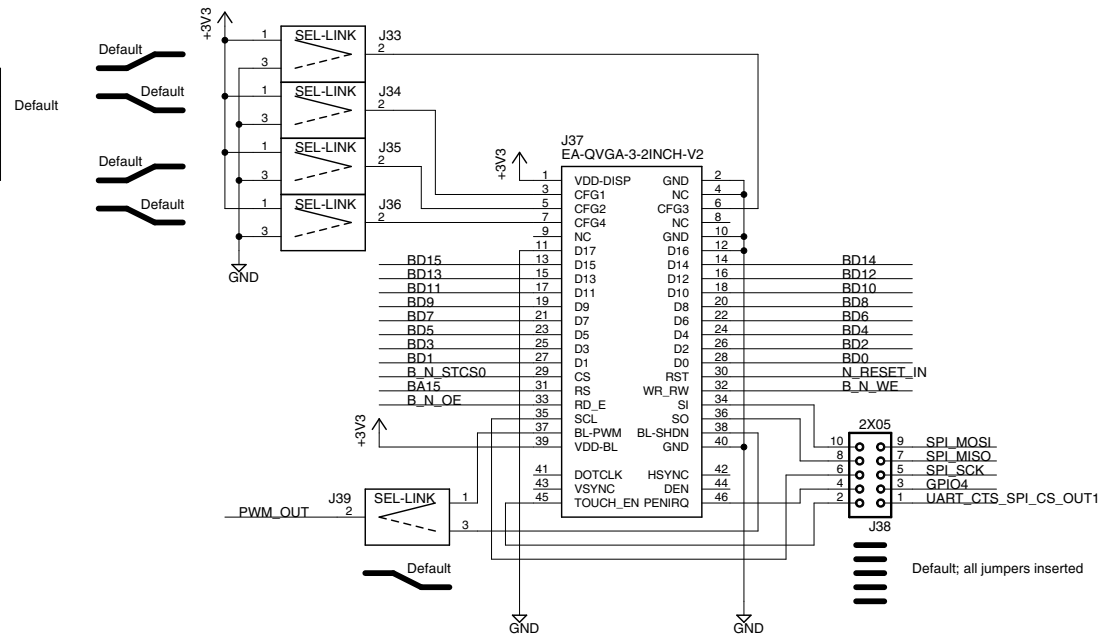
REV:

Date: 2009-02-22 18:13:33

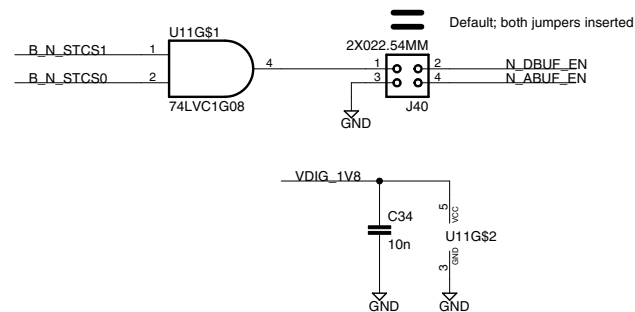
Sheet: 5/7

Interface Setting

CFG1	CFG2	CFG3	CFG4	Interface mode
HIGH	LOW	LOW	HIGH	16-bit parallel
LOW	LOW	HIGH	LOW	9-bit parallel
LOW	LOW	LOW	HIGH	8-bit parallel



Enable Buffers



Stereo Audio Codec

