

Page 2

LCD Expansion Connector

Page 3

Pixel Clock Generation and Touch Interface

Page 4

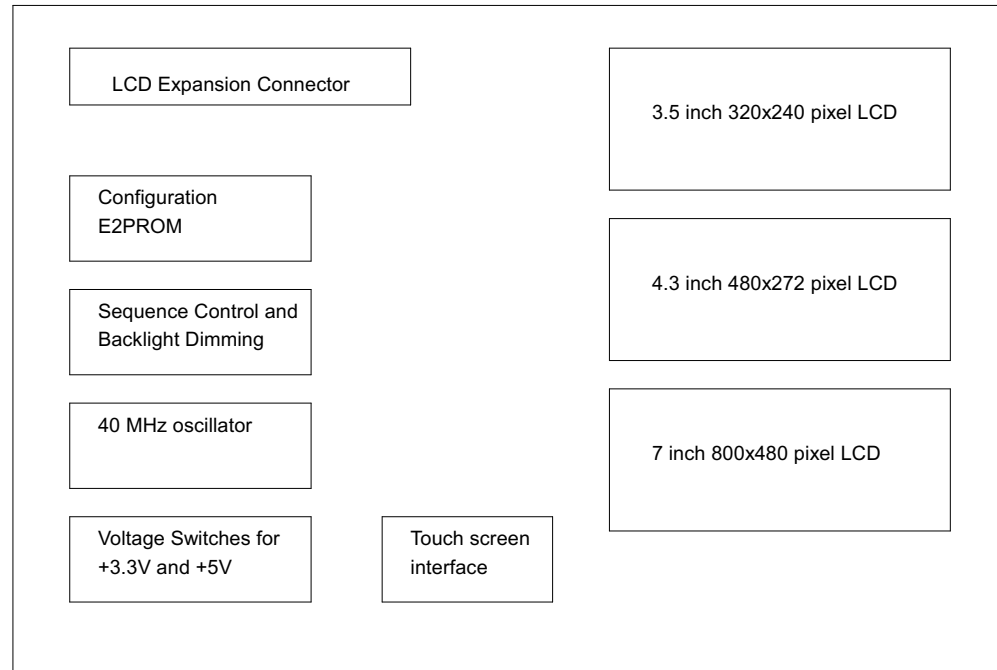
3.5"320x240 pixel LCD

Page 5

4.3"480x272 pixel LCD

Page 6

7" 800x480 pixel LCD



UL = UnLoaded = normally not mounted component.

Default jumper settings are indicated in the schematic.
However, always check jumper positions on actual boards
since there is no guarantee that all jumpers are in default place.

Rev A

Added reset control for 3.5 inch LCD.

Rev PA3

Changed LCDs.

Rev PA1

First revision



© Embedded Artists AB

TITLE: LCD Board rev A

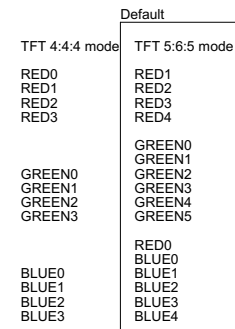
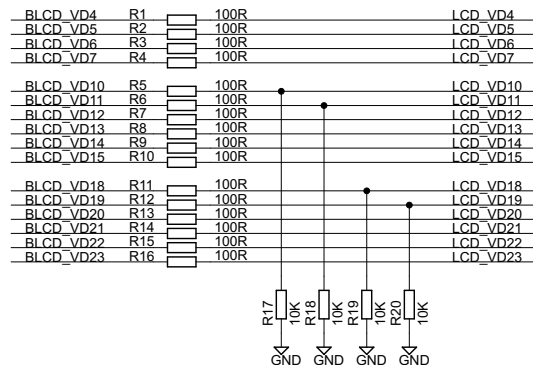
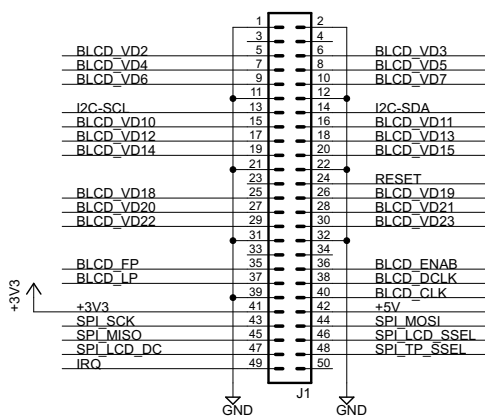
Document Number:

Date: 2011-08-11 00:11:43

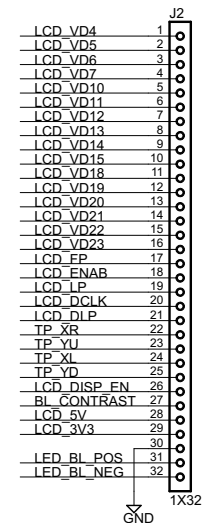
Sheet: 1/6

LCD Expansion Connector

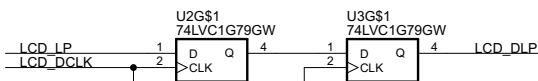
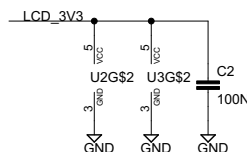
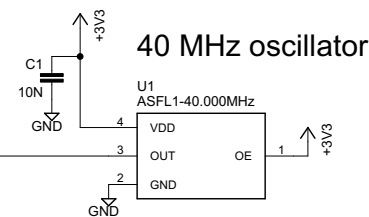
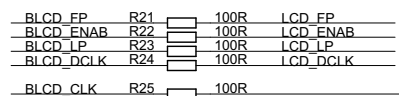
LCD Expansion Connector



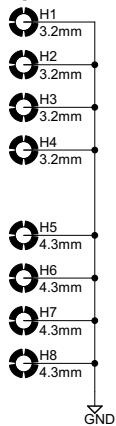
Expansion Connector



Control signals



Mounting holes for LCD



(C) Embedded Artists AB

TITLE: LCD Board rev A

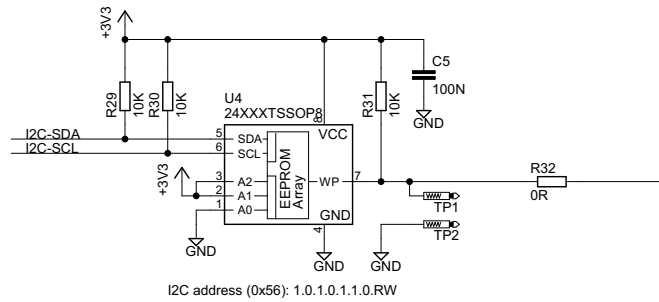
Document Number:

Date: 2011-08-11 00:11:43

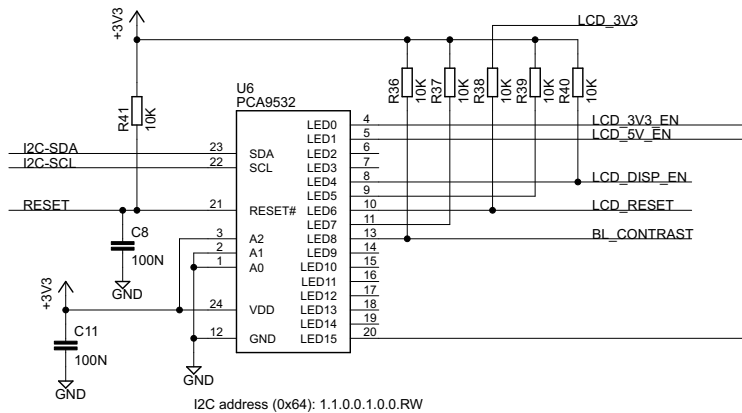
Sheet: 2/6

Pixel Clock Generation and Touch Interface

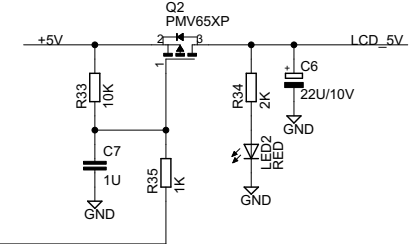
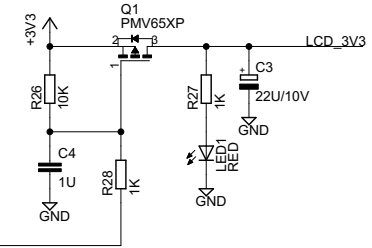
64kbit Configuration E2PROM (see User's Manual for details)



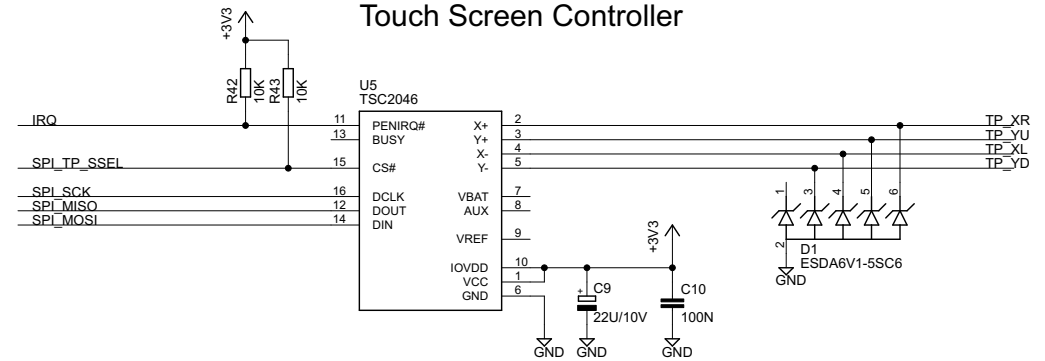
Sequence Control and Backlight Dimming



Power control



Touch Screen Controller



(C) Embedded Artists AB

TITLE: LCD Board rev A

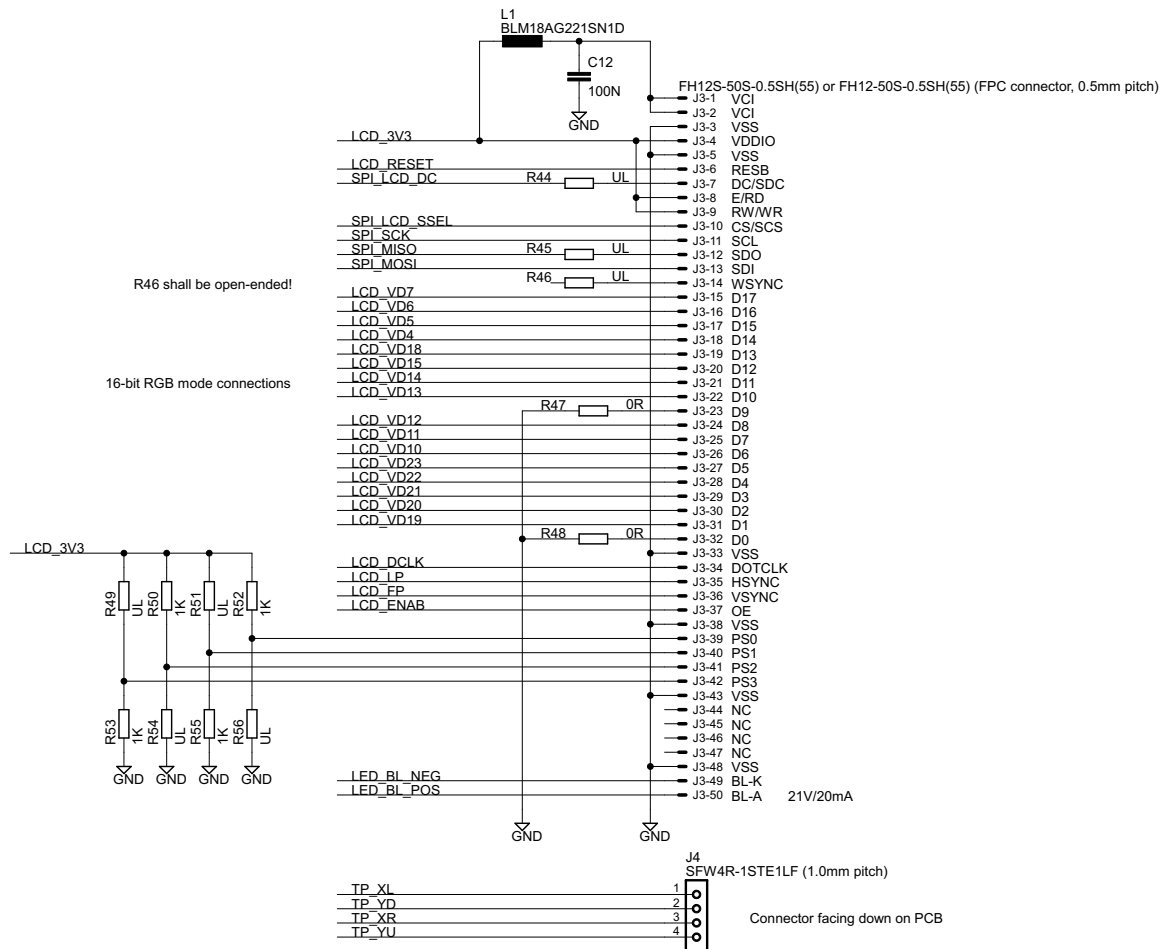
Document Number:

Date: 2011-08-11 00:11:43

Sheet: 3/6

3.5"320x240 pixel LCD

Model: UMSH-8252MD-1T from U.R.T.



(C) Embedded Artists AB

TITLE: LCD Board rev A

Document Number:

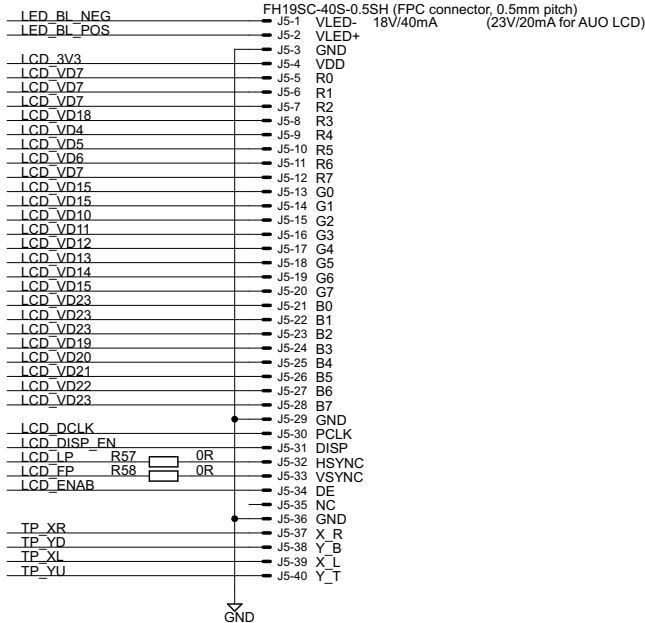
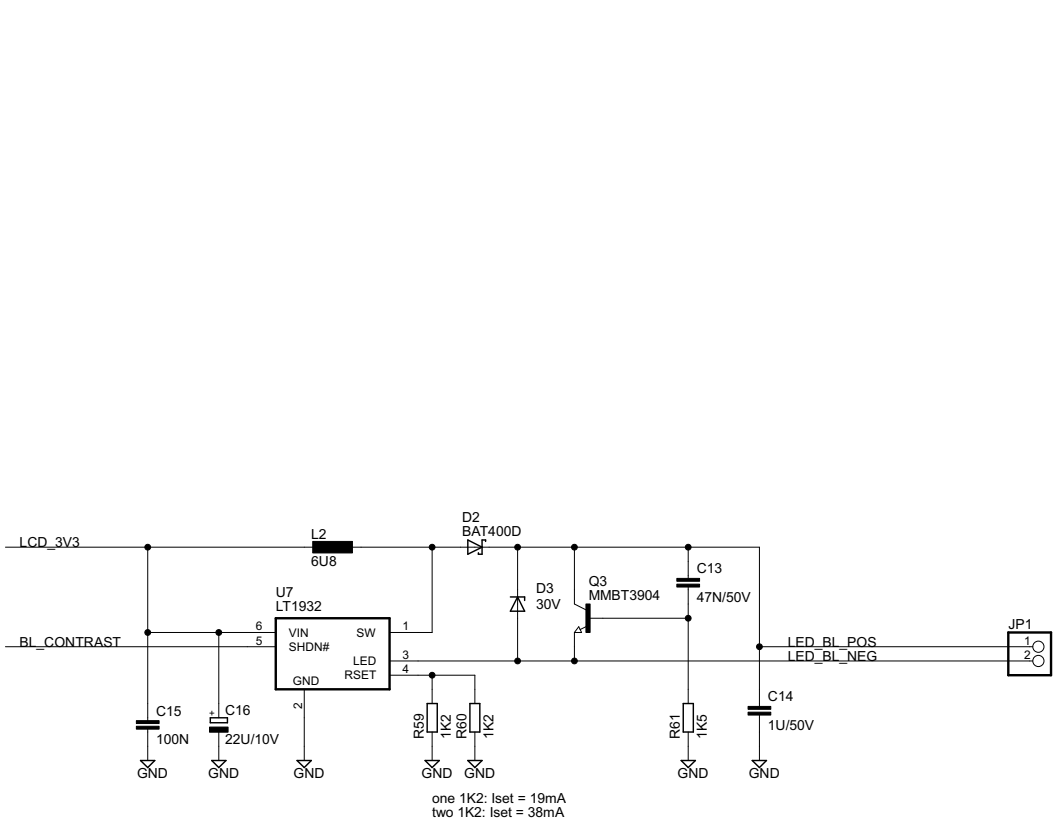
Date: 2011-08-11 00:11:43

Sheet: 4/6

4.3"480x272 pixel LCD

Model: HSD043I9W1-A00-0299 from HannStar

Also compatible with model: A043FW02 V3 from AUO



(C) Embedded Artists AB

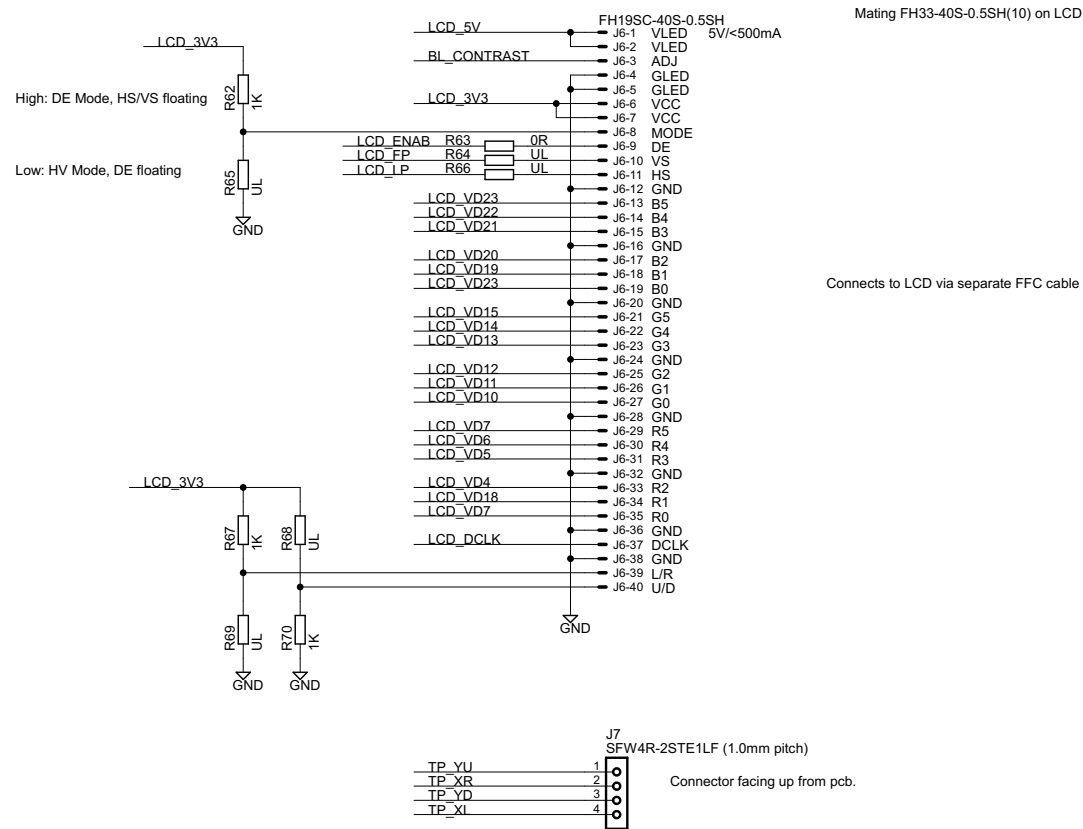
TITLE: LCD Board rev A

Document Number:

Date: 2011-08-11 00:11:43 | Sheet: 5/6

7" 800x480 pixel LCD

Model: AT070TN84 from INNOLUX



© Embedded Artists AB

TITLE: LCD Board rev A

Document Number:

Date: 2011-08-11 00:11:43

Sheet: 6/6