

Page 2

LCD Expansion Connector

Page 3

Pixel clock generation and touch screen interface

Page 4

VGA interface

Page 5

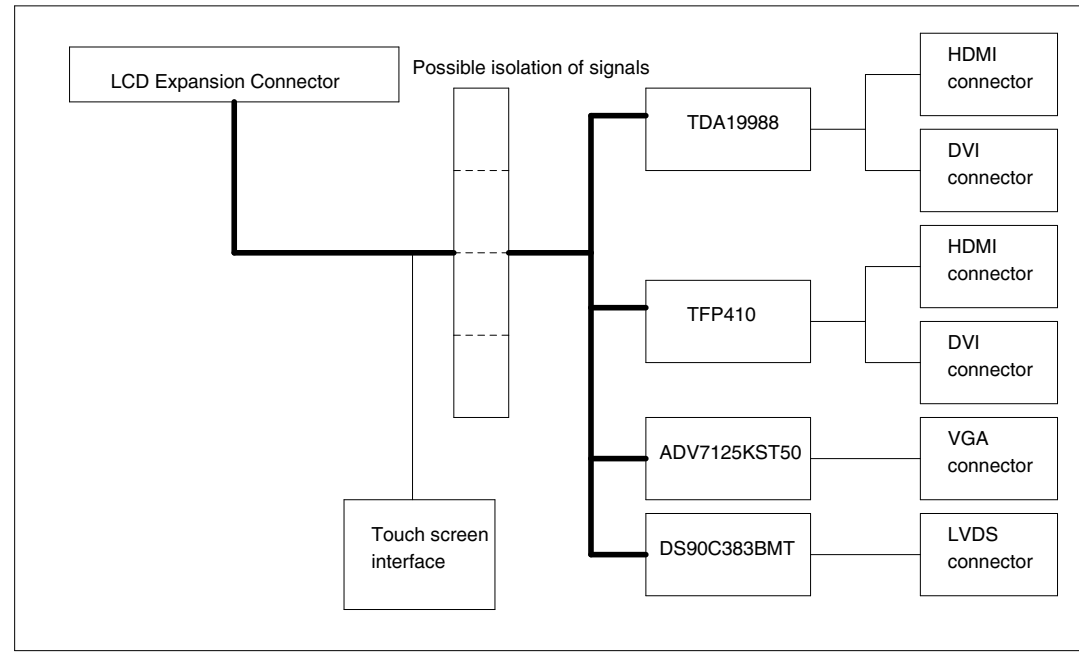
LVDS interface

Page 6

HDMI and DVI interface (TFP410)

Page 7

HDMI and DVI interface (TDA19988)



UL = UnLoaded = normally not mounted component.

Default jumper settings are indicated in the schematic. However, always check jumper positions on actual boards since there is no guarantee that all jumpers are in default place.

Rev A

Added reset to TFP410. U11 and U12 are not mounted. Changed U1-U3. Added U20-U21, R131, C77-C78. Moved LVDS_PWR_EN to LED0 on U7. Changed JP1.

Rev PA1

First revision



© Embedded Artists AB

TITLE: Display Expansion Board rev A

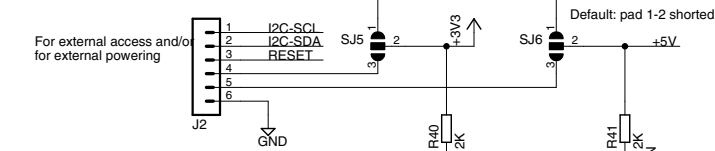
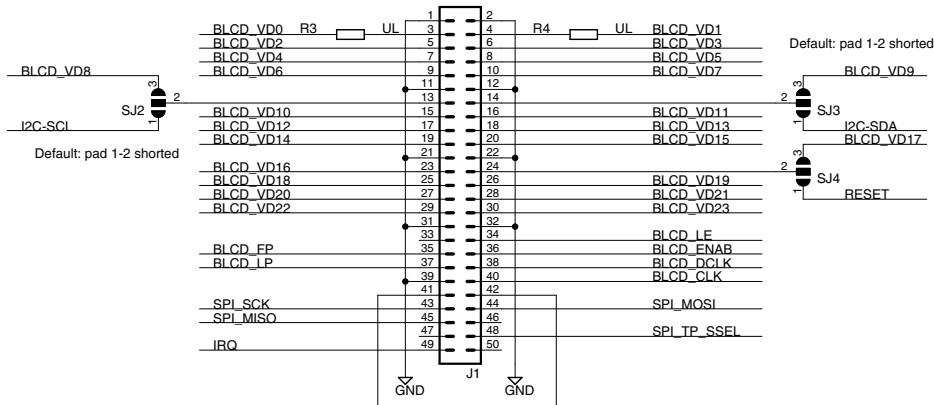
Document Number:

Date: 2012-12-06 08:33:11

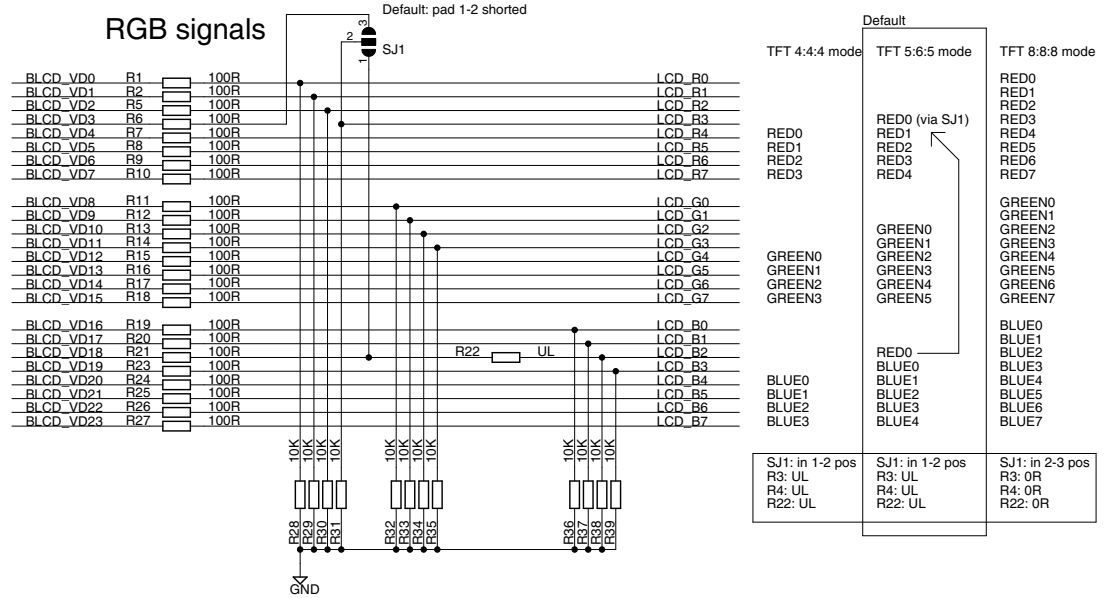
Sheet: 1/7

LCD Expansion Connector

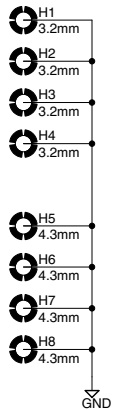
LCD Expansion Connector



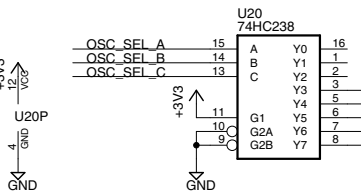
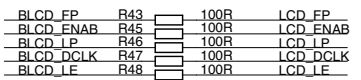
RGB signals



Mounting holes



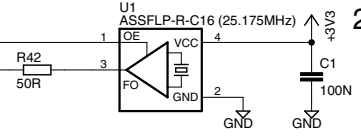
Control signals



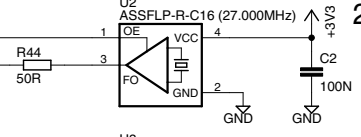
Note: wrong pinning for U20. Corrected with adapter board.

Spread Spectrum Oscillators (+2%)

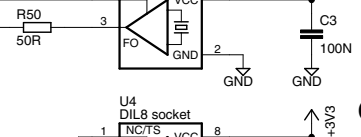
25.175MHz oscillator



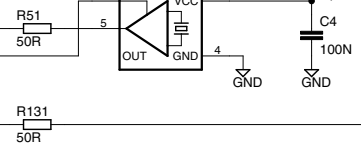
27 MHz oscillator



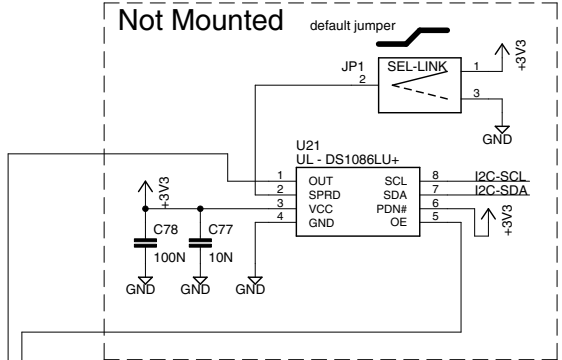
36 MHz oscillator



Optional LCD pixel clock



Not Mounted



(C) Embedded Artists AB

TITLE: Display Expansion Board rev A

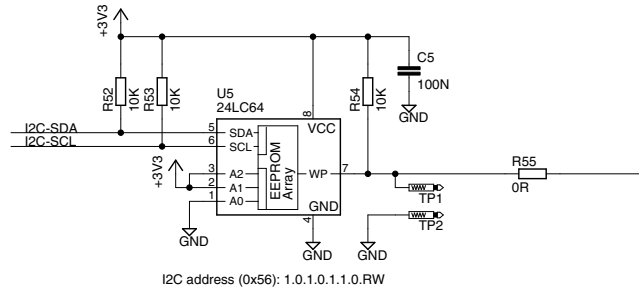
Document Number:

Date: 2012-12-06 08:33:11

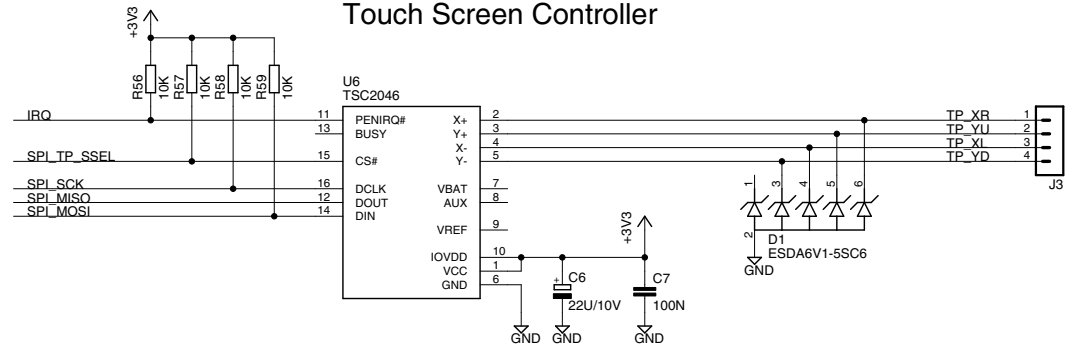
Sheet: 2/7

Pixel Clock Generation and Touch Interface

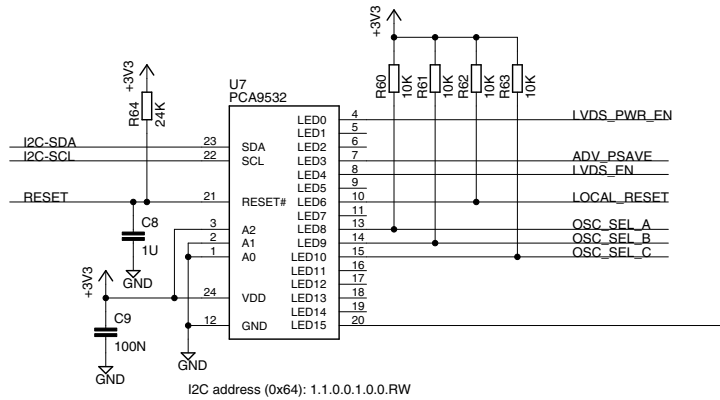
64kbit Configuration E2PROM (see User's Manual for details)



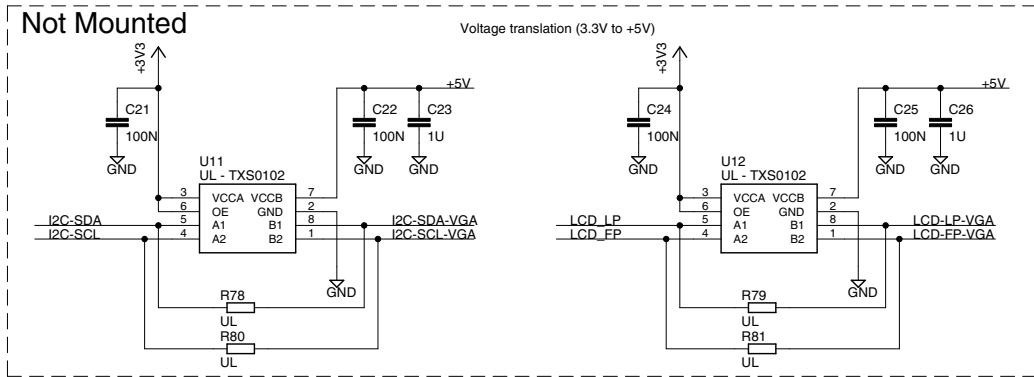
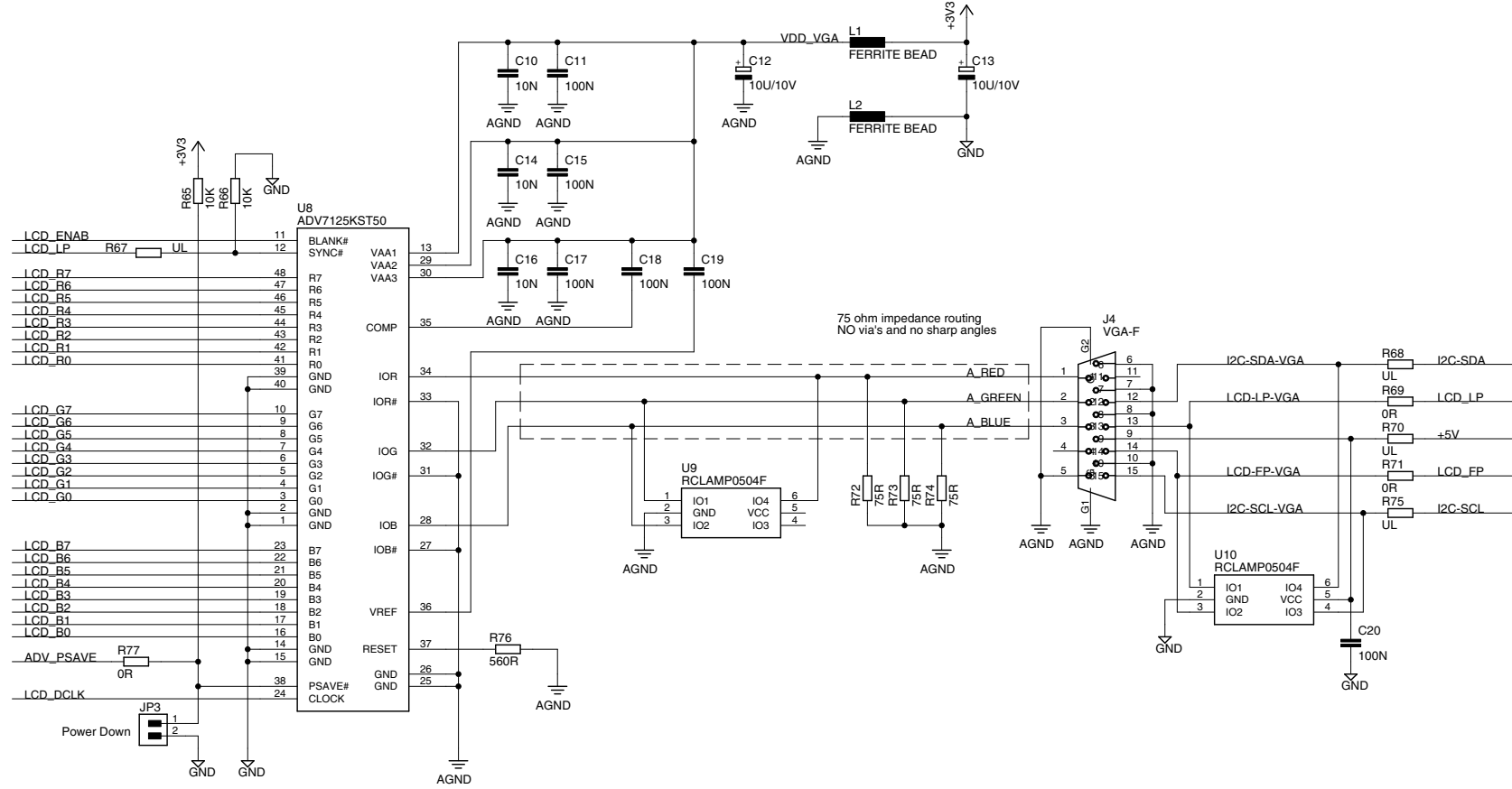
Touch Screen Controller



Power and Oscillator Control



VGA interface



© Embedded Artists AB

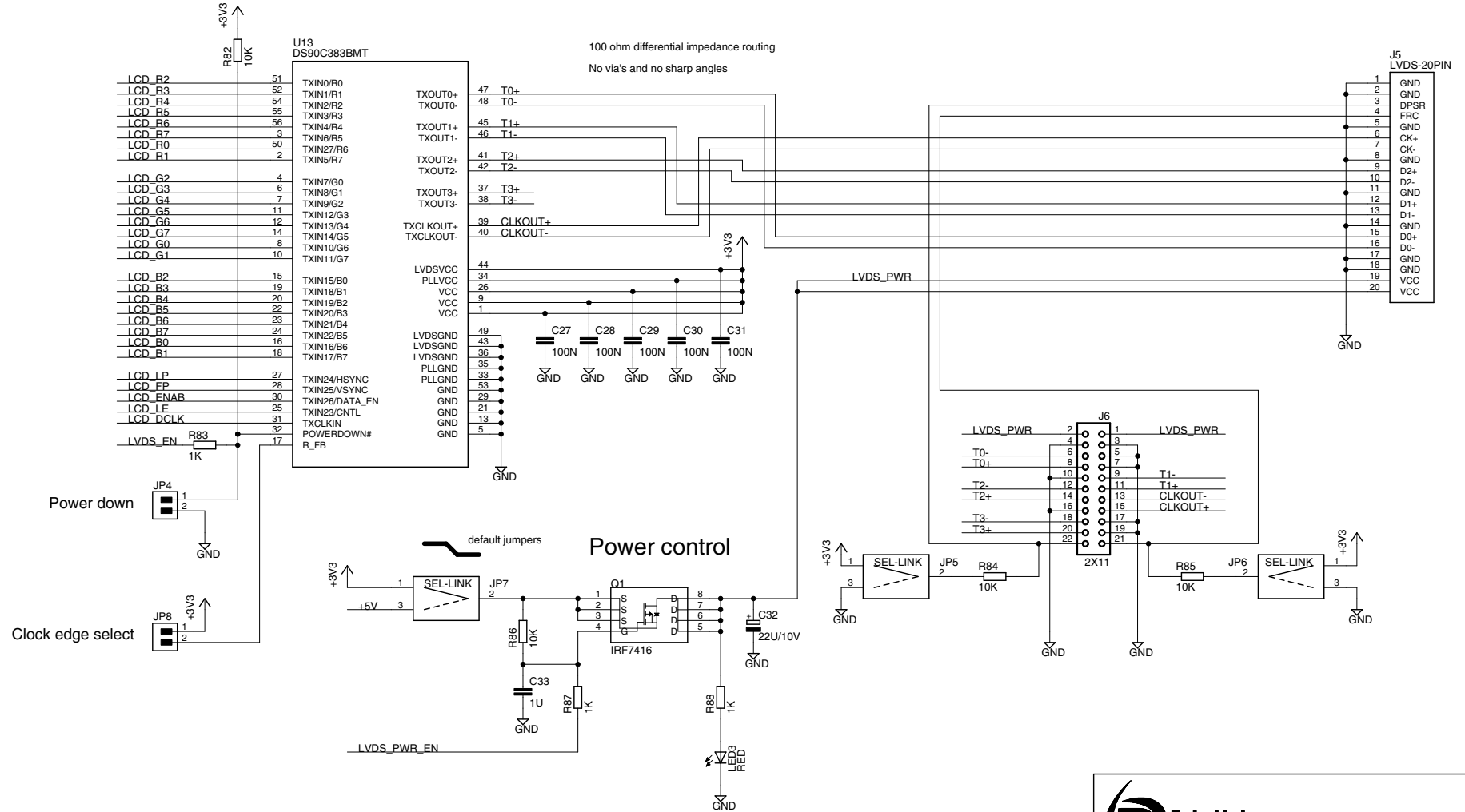
TITLE: Display Expansion Board rev A

Document Number:

Date: 2012-12-06 08:33:11

Sheet: 4/7

LVDS interface



© Embedded Artists AB

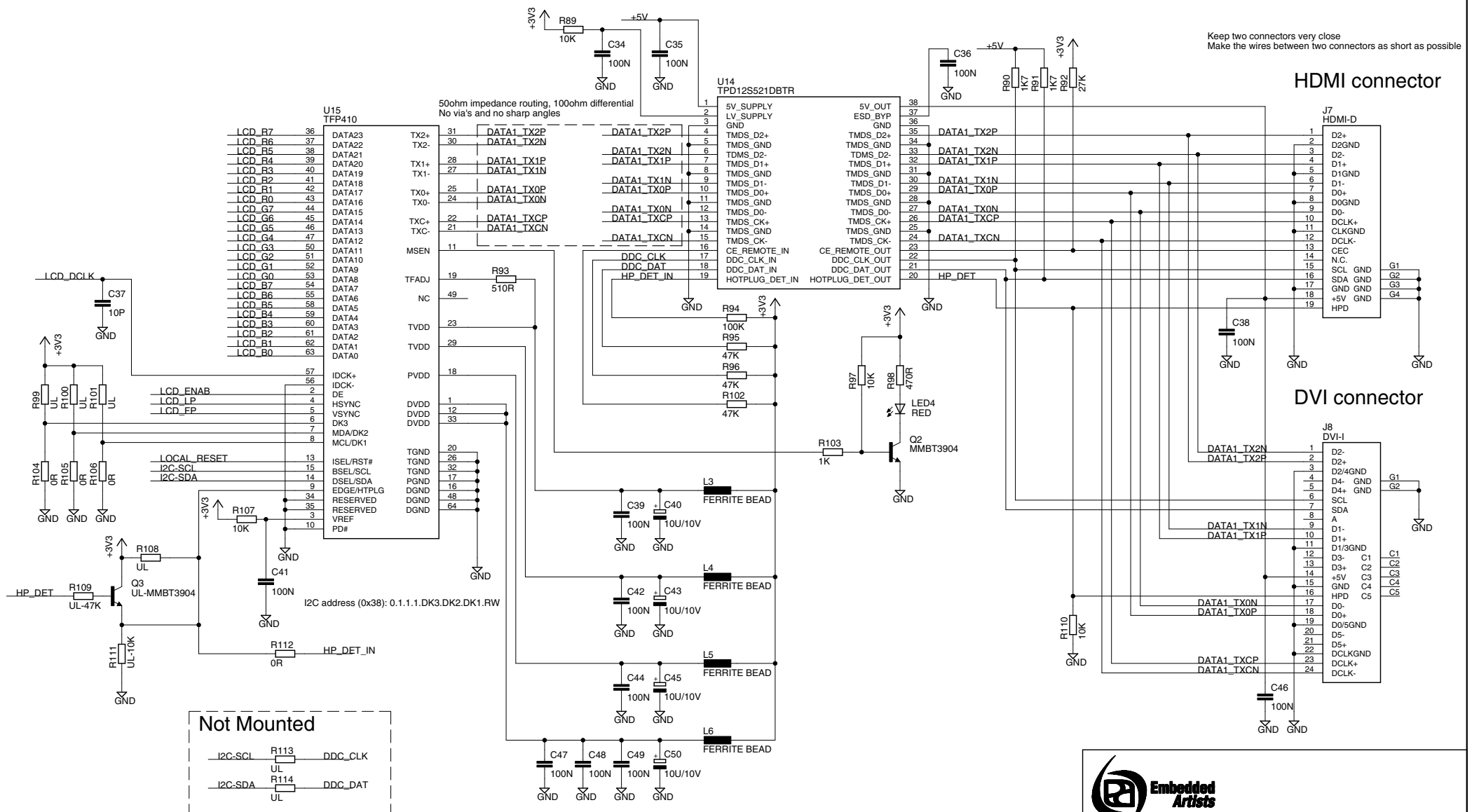
TITLE: Display Expansion Board rev A

Document Number:

Date: 2012-12-06 08:33:11

Sheet: 5/7

HDMI/DVI interface with TFP410



Keep two connectors very close
Make the wires between two connectors as short as possible

HDMI connector

DVI connector

Not Mounted

I2C-SCL R113 DDC_CLK
UL
I2C-SDA R114 DDC_DAT
UL



(C) Embedded Artists AB

TITLE: Display Expansion Board rev A

Document Number:

Date: 2012-12-06 08:33:11

Sheet: 6/7

