

LPC X PRESSO

LPCXpresso

LPCXpresso is a new, low-cost development toolchain available from NXP. The toolchain supports ARM-based LPC microcontrollers and includes a free Eclipse-based IDE and a low-cost target board combined with a JTAG debugger. Embedded Artists has created a Prototype board and a Base board that let engineers explore the features of the **Cortex-M0 LPC1114** and the **Cortex-M3 LPC1343** microcontrollers on the LPCXpresso target boards.

Designed for simplicity and ease of use, the LPCXpresso provides software engineers a quick and easy way to develop their applications from initial evaluation to final production. The LPCXpresso target board is jointly developed by Embedded Artists, Code Red and NXP.



Only 20 EUR!

All information about LPCXpresso is found at:

- www.embeddedartists.com/lpcxpresso
- www.nxp.com/lpcxpresso
- www.code-red-tech.com/lpcxpresso



LPCXpresso Discount

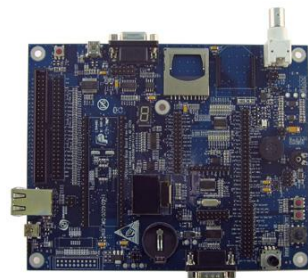
Embedded Artists and Code Red offer LPCXpresso customers valuable discounts.

Embedded Artists gives **15 EUR** discount on the regular Developer's Kits and **7 EUR** off the LPCXpresso Base board. Code Red has an offer to upgrade to full-blown suites.

http://www.embeddedartists.com/product/s/lpcxpresso/LPCXpresso_Discount.pdf

LPCXpresso Base Board

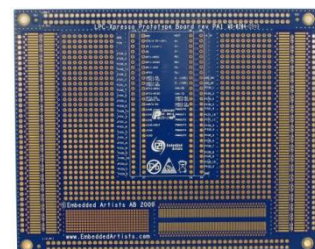
The LPCXpresso Base board makes it possible for you to get started with experiments and prototyping immediately. The Base board can also be used together with the **mbed** module.



http://www.embeddedartists.com/product/s/lpcxpresso/xpr_base.php

LPCXpresso Prototype Board

The Prototype board provides you with an easy-to-use expansion area for own experiments. The Prototype board can be used for education purposes as well as for experiment and prototype projects. The Prototype board is compatible with both the LPCXpresso boards and the **mbed** module.



http://www.embeddedartists.com/product/s/lpcxpresso/xpr_prototype.php